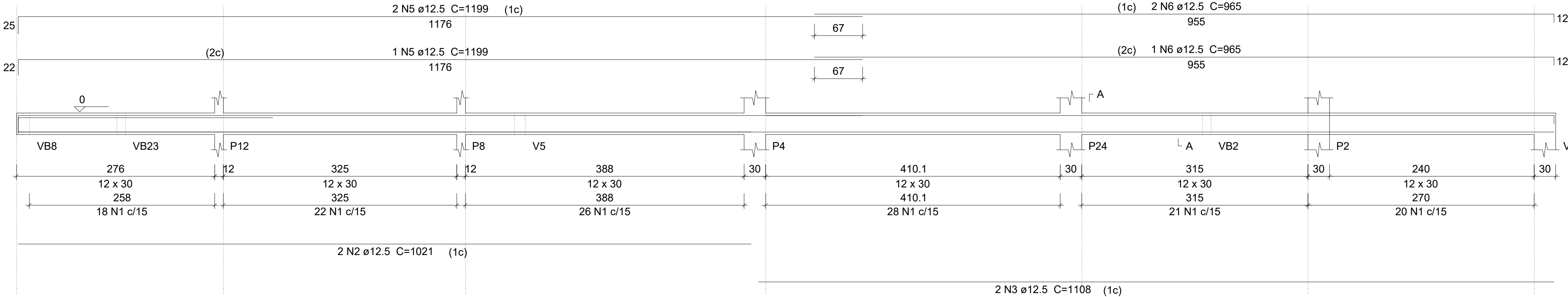


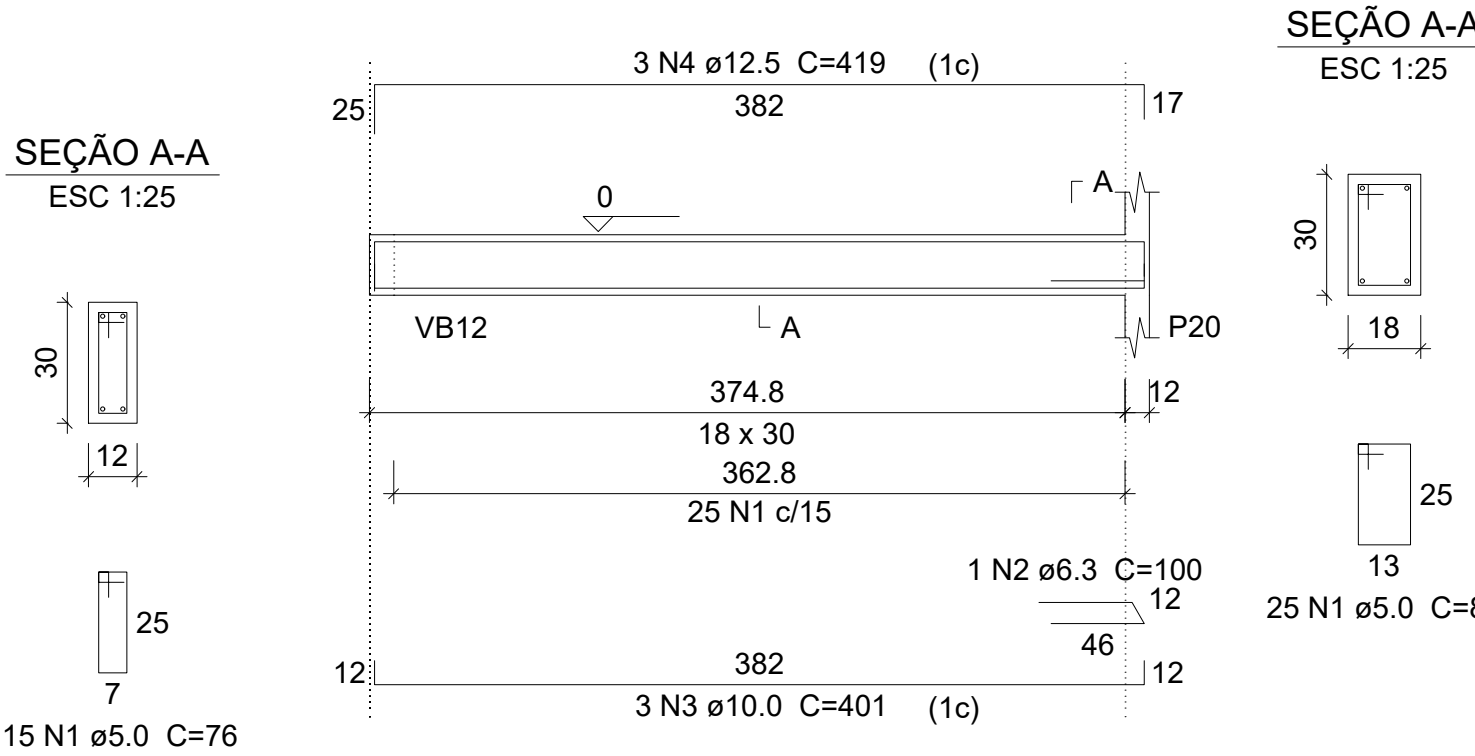
VB19 (12 x 30)

ESC 1:50



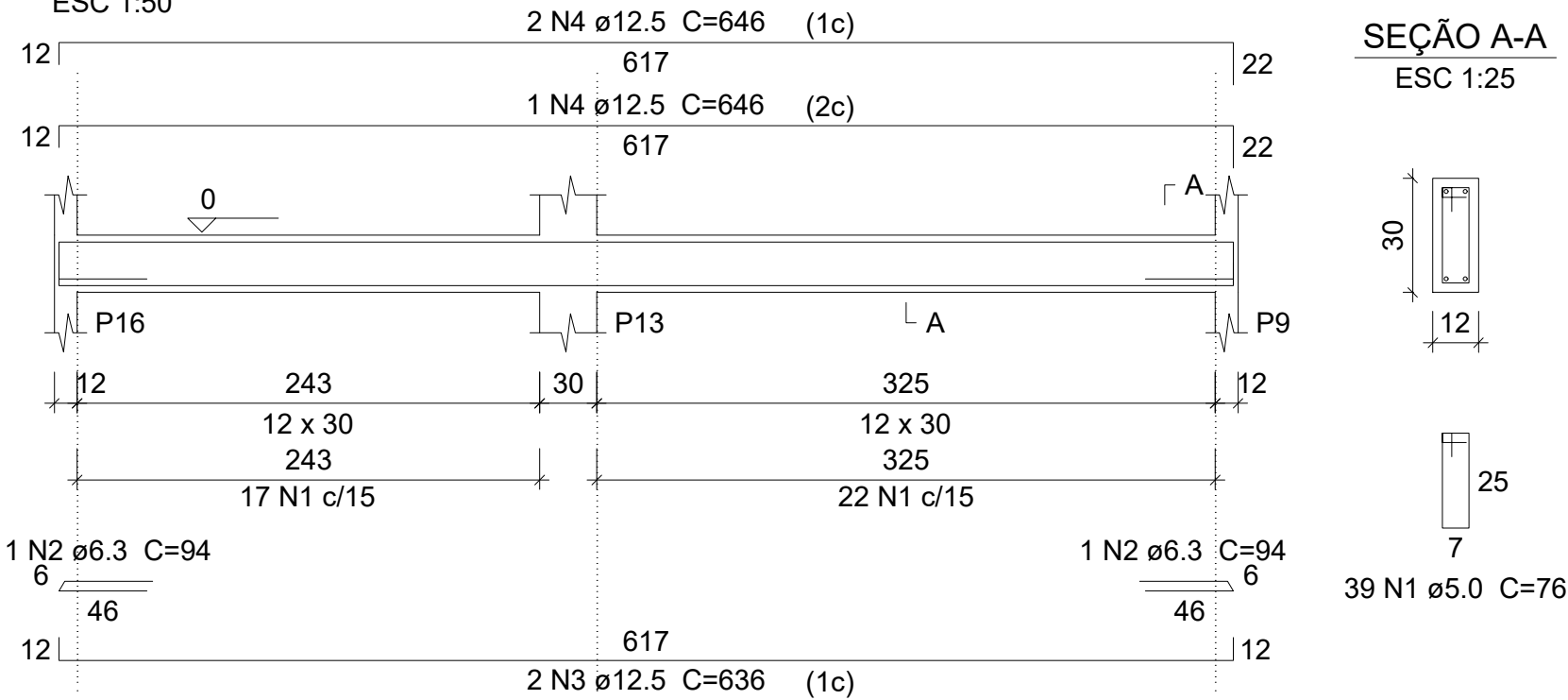
VB20 (18 x 30)

ESC 1:50



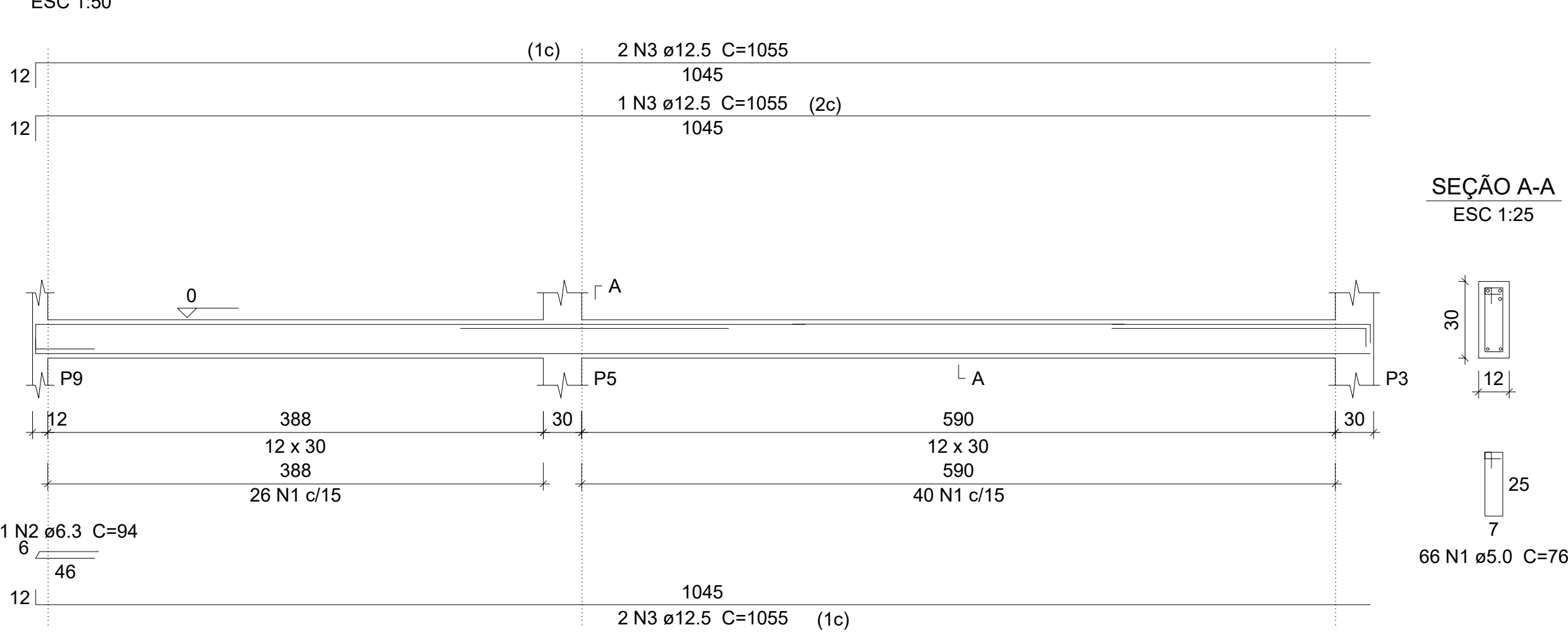
VB21 (12 x 30)

ESC 1:50



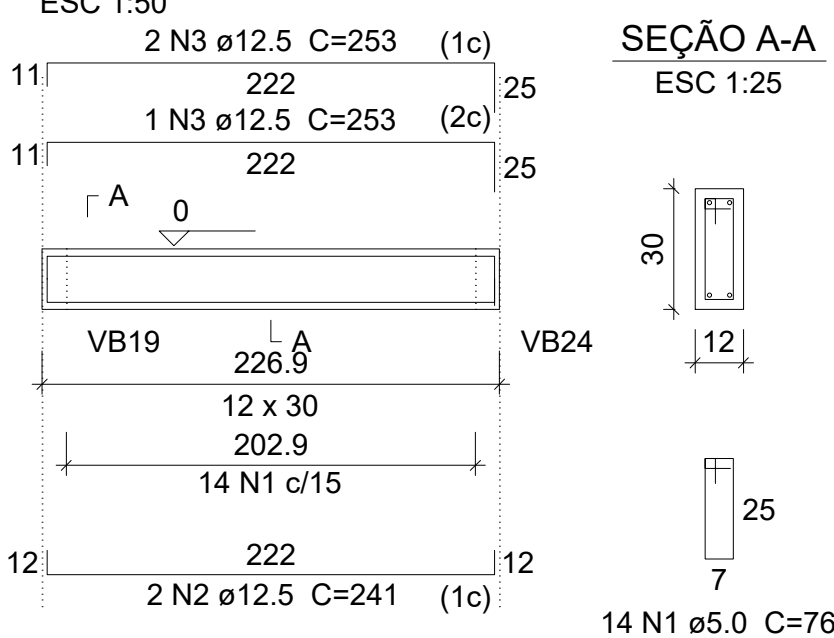
VB22 (12 x 30)

ESC 1:50



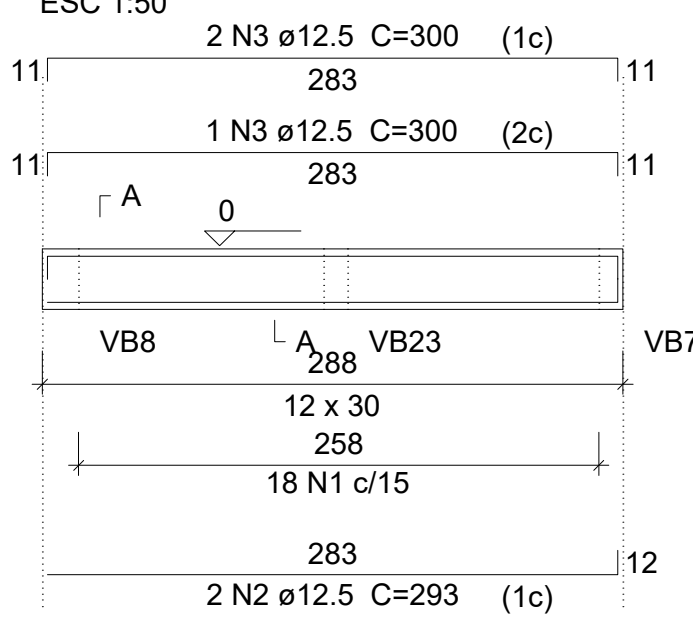
VB23 (12 x 30)

ESC 1:50



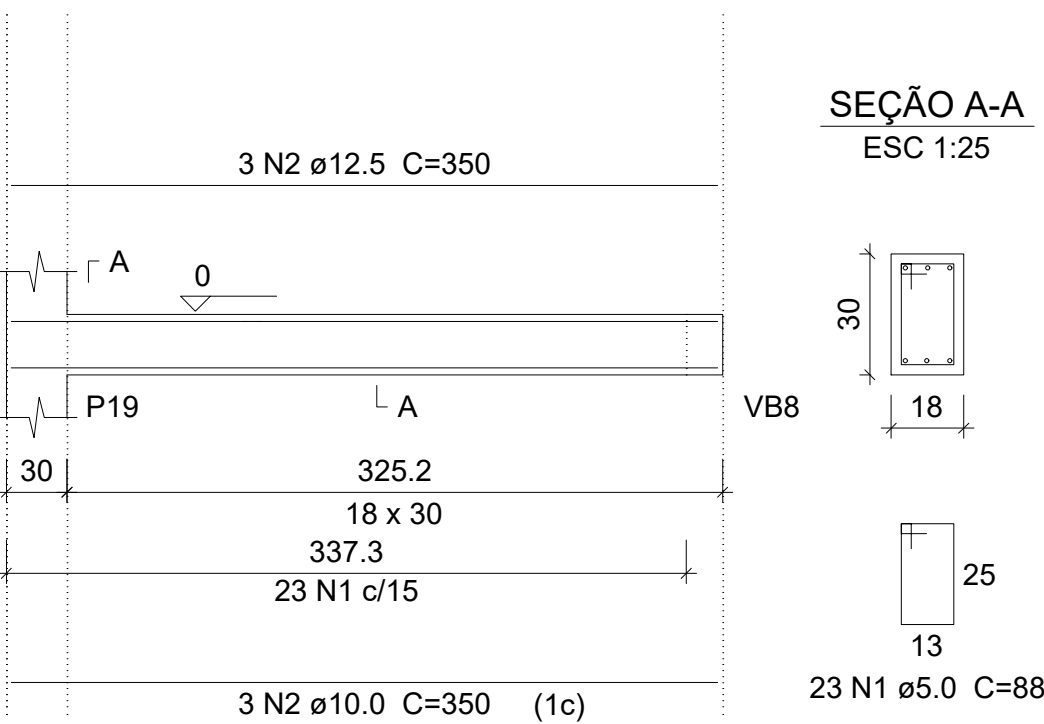
VB24 (12 x 30)

ESC 1:50



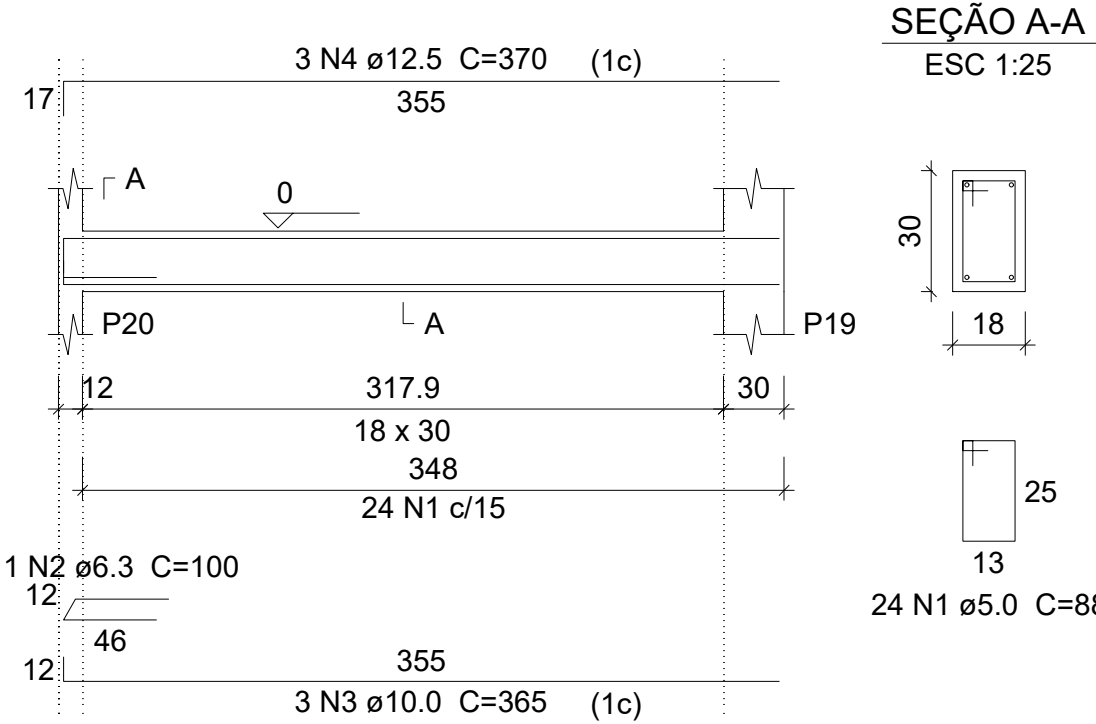
VB25 (18 x 30)

ESC 1:50



VB26 (18 x 30)

ESC 1:50



Relação do aço

ELEMENTO	AÇO	N	DIAM	Q	UNIT (cm)	C.TOTAL (cm)
VB19	CA60	1	5.0	115	76	8740
	CA50	2	10.0	2	1021	2042
	CA50	3	10.0	2	793	1586
	CA50	4	10.0	1	375	375
	CA50	5	10.0	2	1199	2398
VB20	CA50	6	10.0	2	725	1450
	CA60	1	5.0	25	88	2200
	CA50	2	6.3	1	100	100
	CA50	3	10.0	2	401	802
	CA50	4	10.0	2	419	838
VB21	CA60	1	5.0	39	76	2964
	CA50	2	6.3	2	94	188
	CA50	3	10.0	2	636	1272
	CA50	4	10.0	2	646	1292
	CA60	1	5.0	66	76	5016
VB22	CA50	2	6.3	1	94	94
	CA50	3	10.0	2	1055	2110
	CA50	4	10.0	2	260	520
	CA50	5	12.5	1	210	210
	CA50	6	12.5	2	620	1240
VB23	CA50	7	12.5	1	210	210
	CA50	8	12.5	2	214	428
	CA60	1	5.0	14	76	1064
	CA50	2	10.0	2	241	482
	CA50	3	10.0	2	253	506
VB24	CA60	1	5.0	18	76	1368
	CA50	2	10.0	2	293	586
	CA50	3	10.0	2	300	600
	CA60	1	5.0	23	88	2024
	CA50	2	10.0	2	350	700
VB25	CA50	3	10.0	2	124	248
	CA50	4	10.0	2	236	472
	CA60	1	5.0	24	88	2112
	CA50	2	6.3	1	100	100
	CA50	3	10.0	2	365	730
VB26	CA50	4	10.0	2	370	740

Resumo do aço

AÇO	DIAM	C.TOTAL (m)	PESO + 10 % (kg)
CA50	6.3	4.9	1.3
	10.0	197.5	133.9
	12.5	20.9	22.1
CA60	5.0	254.9	43.2
PESO TOTAL			
CA50	157.4		
CA60	43.2		

Vol. de concreto total (C-30) = 2.04 m³  
Área de forma total = 37.5 m²



RUA SANTA ROSA, 520  
CENTRO  
TUCUNDUVA-RS  
Fone: (55) 3542-1022

**PREFEITURA MUNICIPAL DE TUCUNDUVA**  
Secretaria de Obras, Viação e Serviços Urbanos

GESTÃO:  
2017-2020

Obra:

CRAS

PROPRIETÁRIO: Prefeitura Municipal de Tucunduva

RESP.TÉCNICO: ENG. CIVIL CRISTIAN SCHENDEL / CREA 195387

ÁREA:  
213,78m²

ESCALA:  
1/75

ESTRUTURAL

PRANCHAL:

18

REVISÃO:

DATA: NOVEMBRO DE 2019  
DESENHO: Juliana Bohun